

Southwest Industrial Park

OVERVIEW

Long Prairie's Southwest Industrial Park is "shovel ready." All zoning and environmental issues have been addressed, and top notch-utilities and fire protection are ready for service. The area is designated a JOBZ Tax Free Development Zone by the State of Minnesota.

Site Size	50 + acres
Parcel Sizes	From 1-2.5 acres. Larger sites can be assembled.
Access	10-ton all-weather road, 2 block(s) to US Highway 71
Services	Full utility services, including electricity, natural gas, sewer and water
Zoning	Medium Industrial
Adjacent Uses	Industrial, agricultural
Covenants/Design Standards	Yes, contact city for details
Incentives	JOBZ and various loan funds

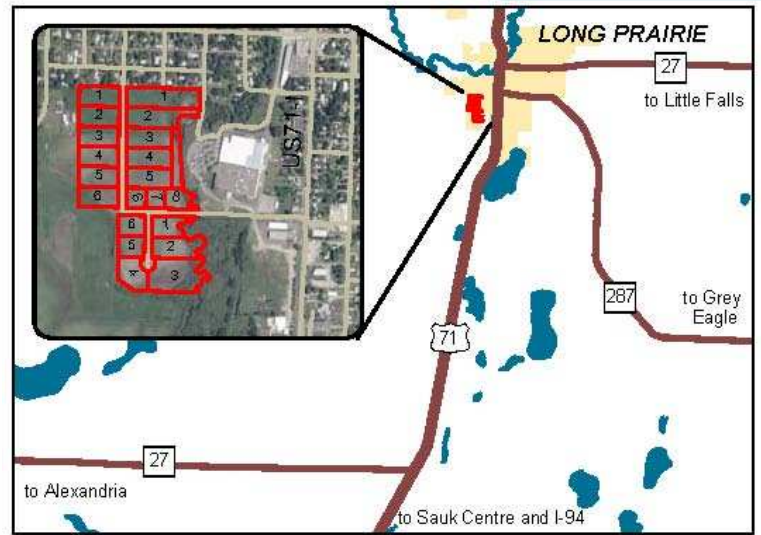
UTILITIES

WATER

Supplier	City of Long Prairie
Source	5 wells ranging in depth from 80' to 200'
Water Storage	1 million gallons
Avg. Daily Demand	500,000 gallons per day
Pumping Capacity	1,400,000 gallons per day

WASTE TREATMENT

Supplier	City of Long Prairie
Treatment Type	Mechanical Plant
Capacity of Plant	800,000 gallons/day
Average Demand	500,000 gallons/day
Peak Demand	923,000 gallons/day



ELECTRICITY

Supplier	Minnesota Power
-----------------	-----------------

NATURAL GAS

Supplier	Centerpoint Energy
-----------------	--------------------

CONTACT

Dave Venekamp, City Administrator
320-732-2167
dvenekamp@embarqmail.com



www.longprairie.org